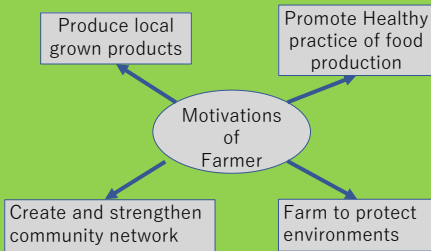


Introduction

- To analyze problems of local people based on social survey (**social implementation**)
- To provide technical solutions to problems faced by them. (**technical creation course**)
- To view & participate in local culture festival (**culture creation**)
- To **understand** farming practices of local

Motivations of local farmers

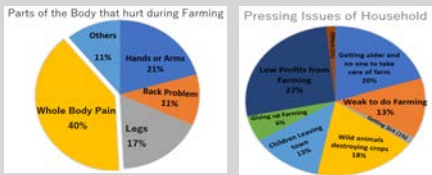


Survey and Observation

Based on survey it was found that problems faced by local people are

- Ageing population and depopulation
- No successors of farmland
- Wild-animal attacks
- Pain in arms and back due to heavy lifting

Survey Results for Issues of Household and Farming



Survey Results for views on new technology



Observations

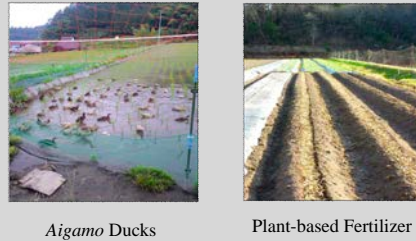


Area Information

Area:	646.24 km ²
Population:	18,842 (July 2018)
Households:	8,556 (July 2018)

Source: Kitahiroshima Town Official Website

Local Farming Practices



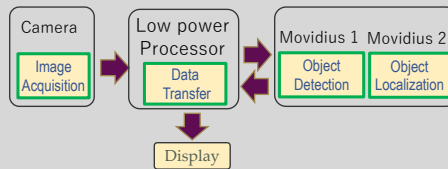
Local Culture



Camera Sensing system for animal detection

- Design surveillance system to detect animals invading the farmland
- The system must satisfy following criteria
 - Low Cost
 - Light weight
 - Artificial Intelligence (AI) enabled

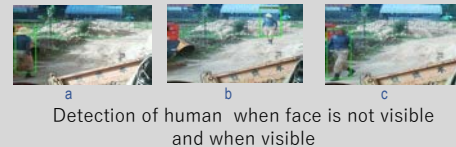
System Design



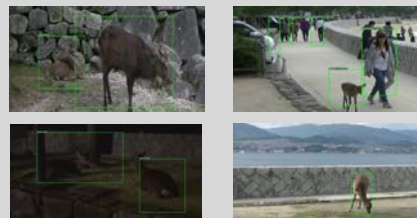
System Setup



Result



Result



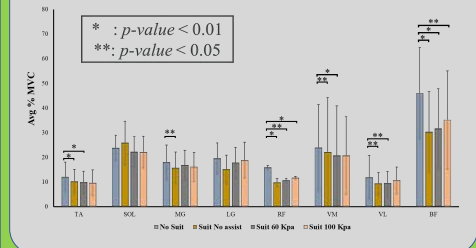
Detection of Deer at various times
Location : Miyajima

Walking Assist Suit

Design and Evaluation



Reduction in Muscle Excitation



Elderly Person



Younger Generation



Conclusion

Assistive Suit

Walking assist suit is useful for certain age group whereas addition of upper limb augmentation of would be beneficial for larger group.

Camera Sensing

Light weight, low cost and low powered AI-enabled surveillance system can be used to detect animals in the farm land.

Acknowledgement

- Onsite Mentor:** Shirakawa-san
- Field work:** Miyamoto-san, Iwasaki-san, Nakae-san, Fujiwara-san
- Questionnaire:** Irisawa-san, Kouno-san, Shimada-san, Takishita-san, Miyamoto-san
- Data of Kita-Hiroshima:** Shinnaka-san